



ADVANCED NOISE TECHNOLOGY

XOV 220 Series Low Noise VCXO

Frequency Range: 40 MHz to 125 MHz

Size 1.5" Length x 1.5" Width x .5" Height

Output Performance

Output Power: +13 dBm
 Harmonics: < -30 dBc
 Non Coherent Spurious: < -90 dBc
 Load Impedance: 50 Ohms

Frequency vs. Temperature Performance

Temperature	Stability
0° C to 50° C	±10 PPM
-20° C to 70° C	±15 PPM
-40° C to 75° C	±20 PPM

Electrical Frequency Control

EFC: ±10 VDC, Negative Slope
 Control Range: ±8 PPM
 (Optional): (0 to 10 VDC, Positive Slope)
 Input Impedance: 5 K Ohm typical

Aging Performance

±1.0 PPM / 1st year;
 < ±10.0 PPM / 10 years

Operating Supply

Input Voltage: +12 to +15 VDC
 Input Current: See Below

Mechanical Frequency Adjust

Compensation for 10 years aging

*FOR SPECIAL REQUIREMENTS
 CONSULT THE FACTORY*

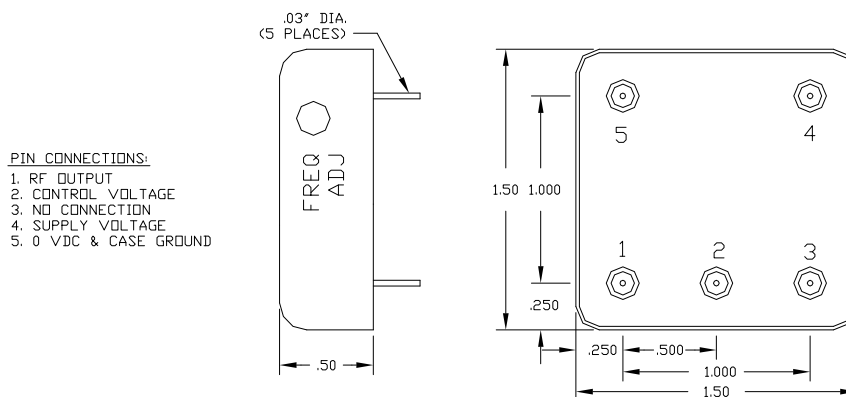
Phase Noise Performance (typical 100 MHz)

	Standard	Improved	Premium
100 Hz	-120 dBc/Hz	-125 dBc/Hz	-128 dBc/Hz
1 KHz	-150 dBc/Hz	-155 dBc/Hz	-158 dBc/Hz
10 KHz	-165 dBc/Hz	-168 dBc/Hz	-168 dBc/Hz
100 KHz	-168 dBc/Hz	-170 dBc/Hz	-172 dBc/Hz

Input Current:

+ 12 to + 15 VDC @ 40 ma + 12 to + 15 VDC @ 50 ma + 15 VDC @ 65 ma

STANDARD UNIT OUTLINE DRAWING



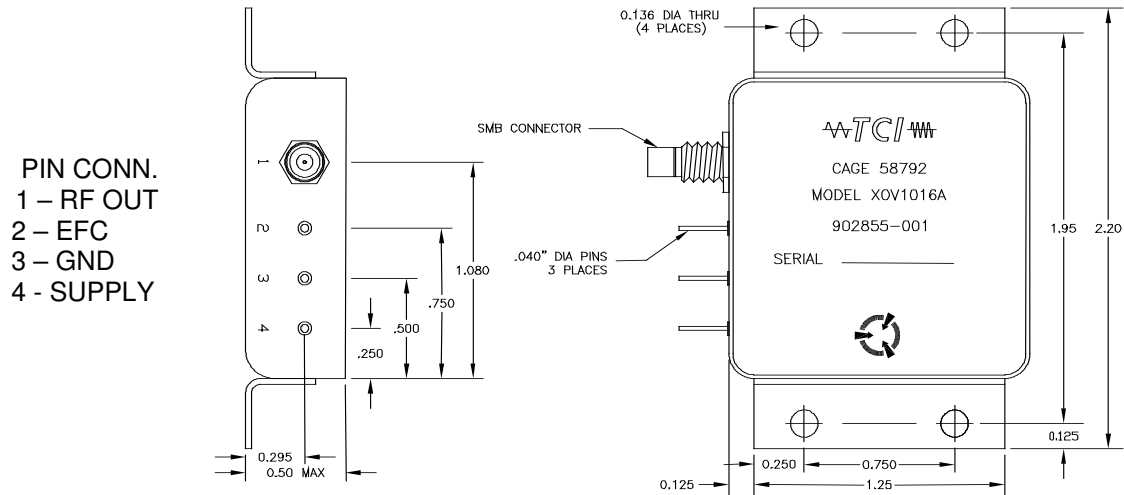
See Back for Package Options

Techtrol Cyclonetics Inc.

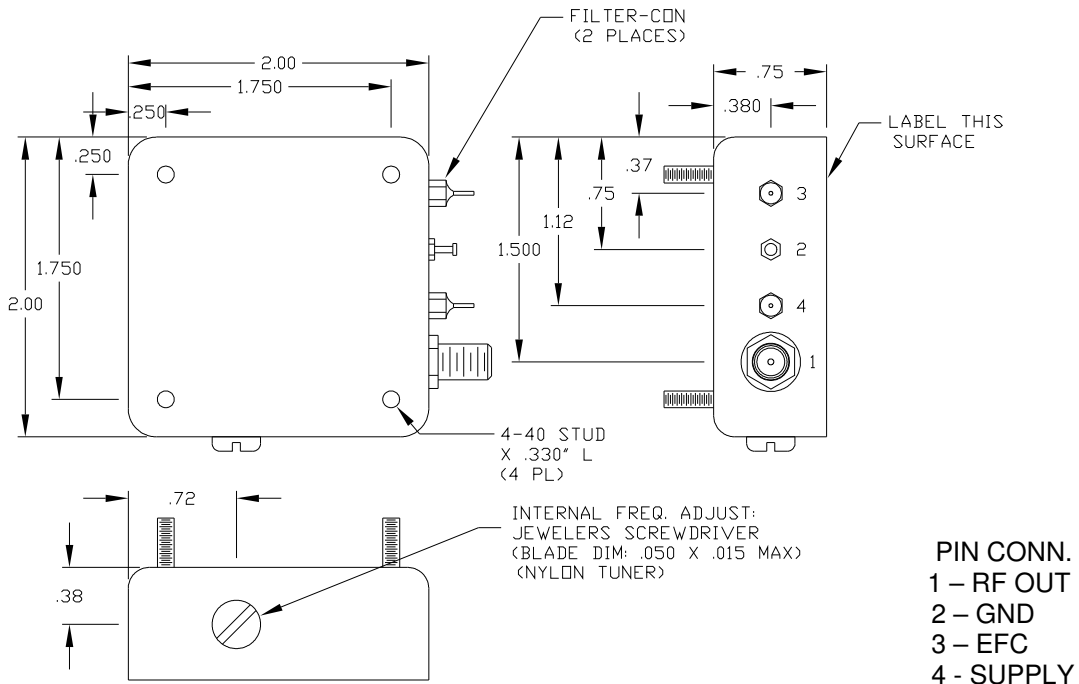
815 Market Street New Cumberland, PA 17070
 Phone: (717) 774-2746 Fax: (717) 774-6799
 Website: tci-ant.com E-mail: Sales@tci-ant.com

XOV220 SERIES OPTIONAL MOUNTING

SMC / SMA CONNECTOR OUTPUT OPTION (XOV220F)



SMA, STUD MOUNTING (XOV220L)



Techtrol Cyclonetics Inc.

815 Market Street New Cumberland, PA 17070

Phone: (717) 774-2746 Fax: (717) 774-6799

Website: tci-ant.com E-mail: Sales@tci-ant.com